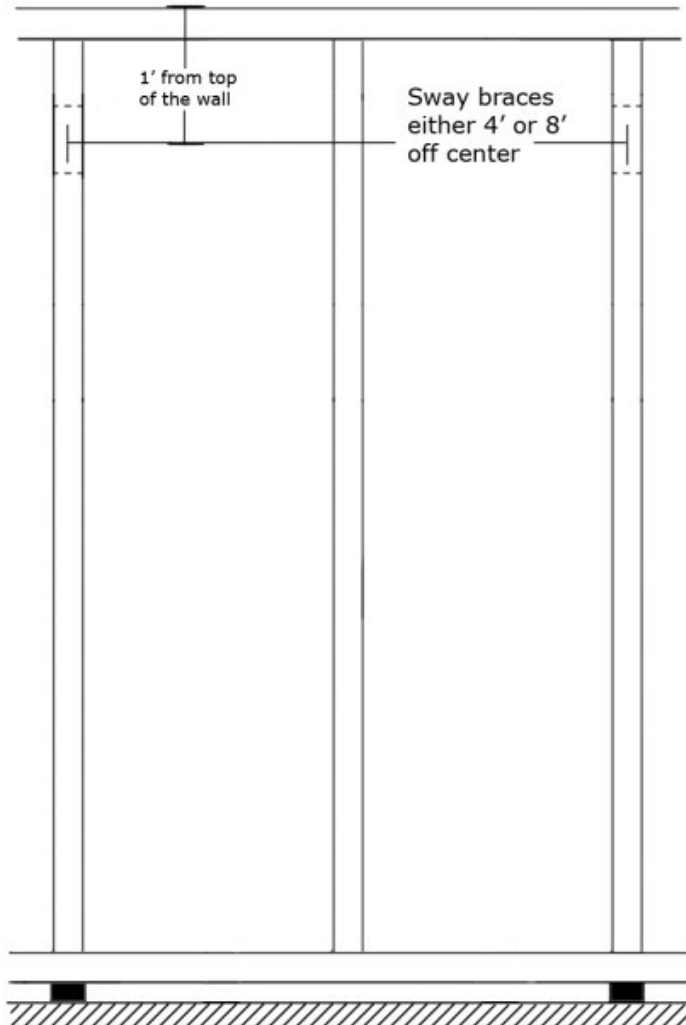
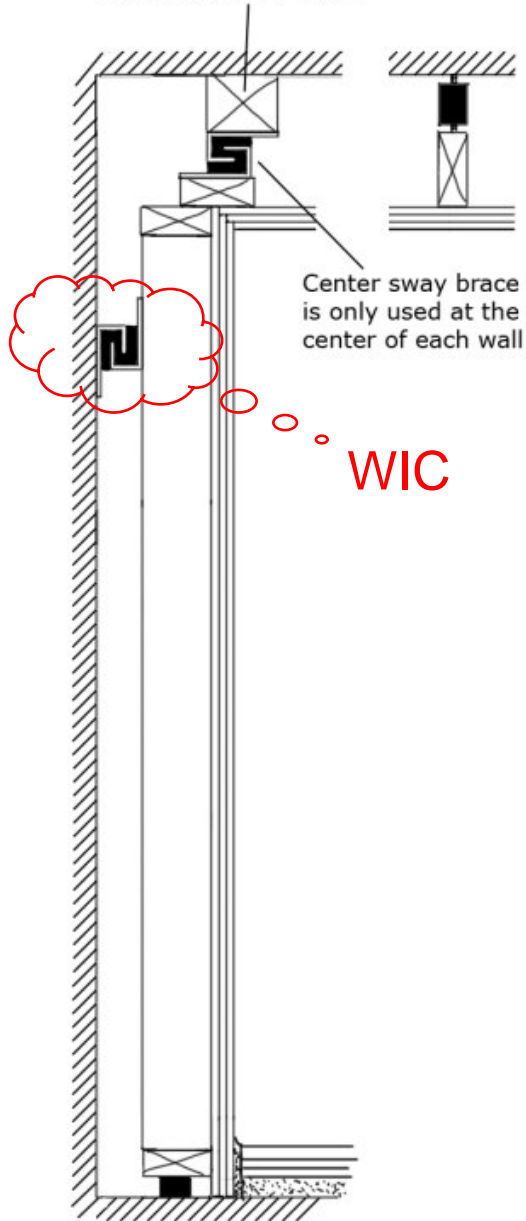
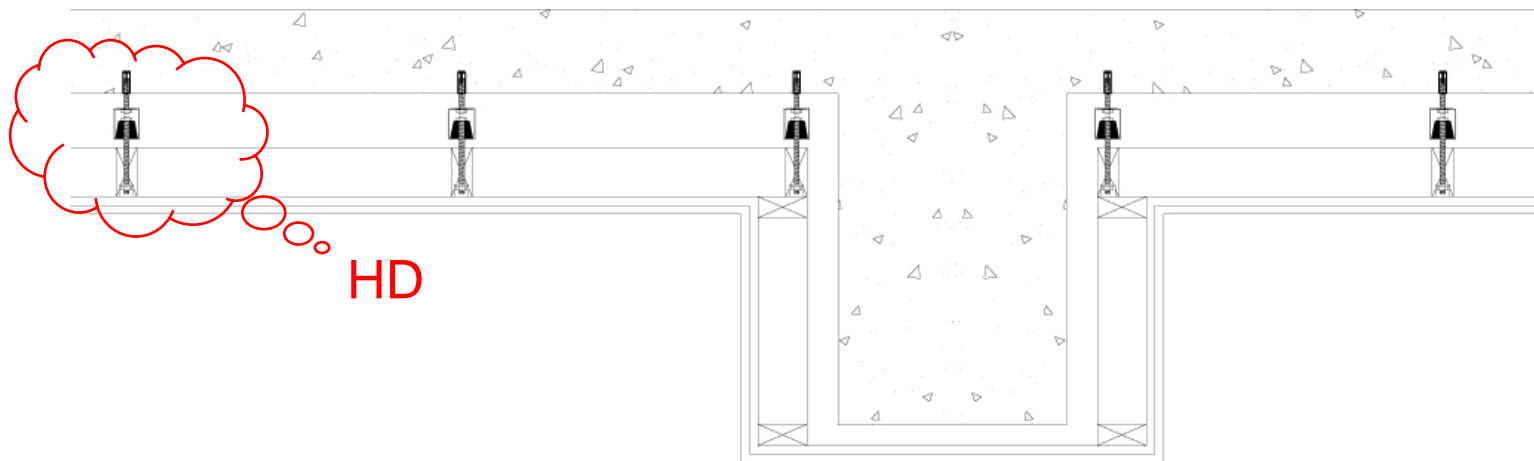
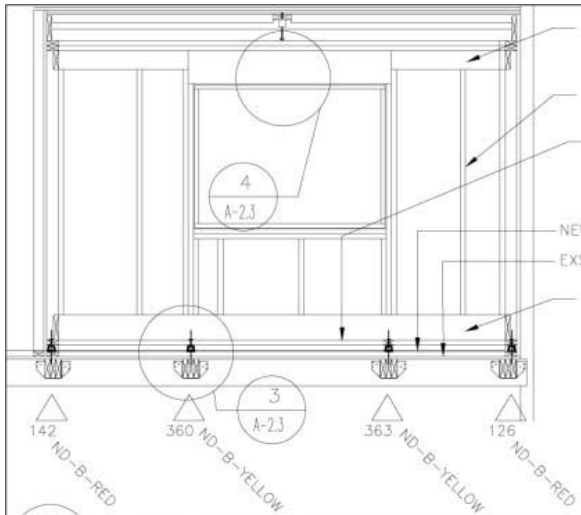


Simply a block of wood used as anchor for the wall/ceiling sway brace

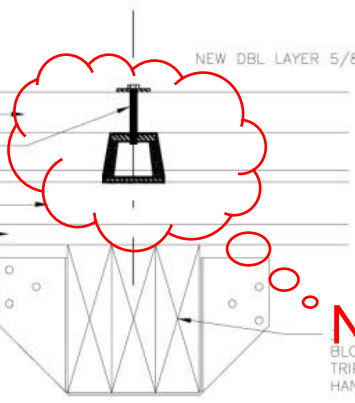




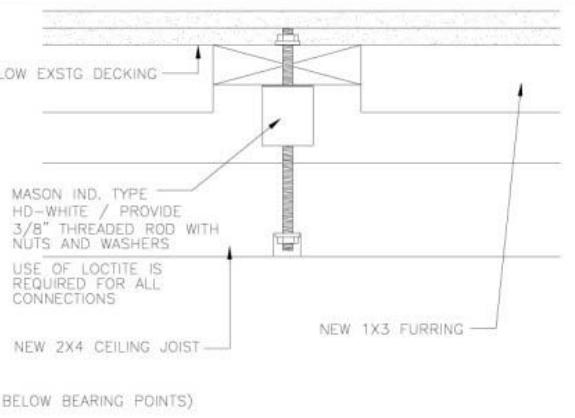
HD



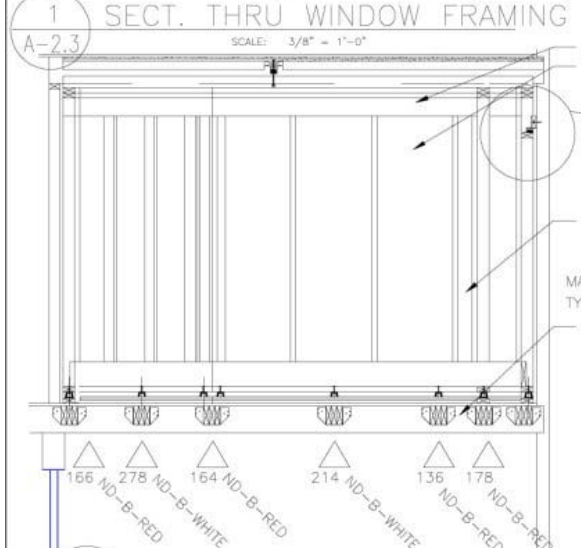
3 DETAIL @ ISO BASE
A-2.3
SCALE: 3/8" = 1'-0"



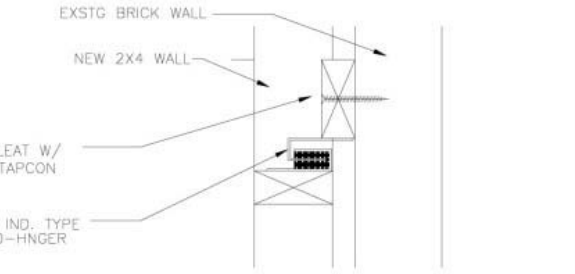
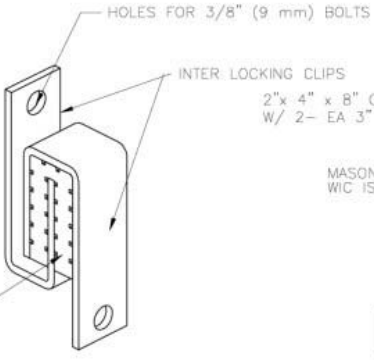
ND
BLOCK W/
TRIPLE W/ J.
HANGER (TYP BELOW BEARING POINTS)



4 DETAIL @ ISO HANGER
A-2.3
SCALE: 3/8" = 1'-0"



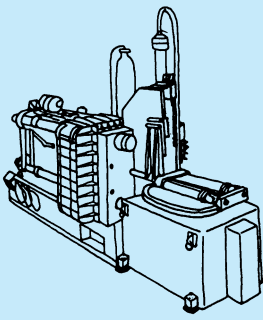
6 WIC WALL SWAY BRACE
A-2.3
SCALE: NTS



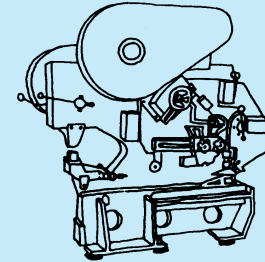
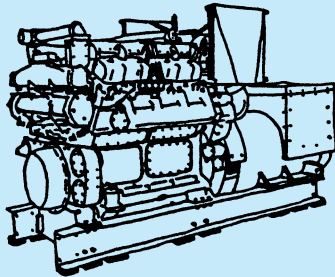
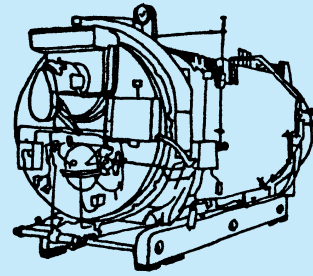
5 DETAIL @ SWAY BRACE
A-2.3
SCALE: 3/8" = 1'-0"

Sound Solutions 18 Lester Drive, Central Village, CT 06332 Tel: (860) 564-1975 Godfrey Studios Godfrey Diamond 659 Park Place, Brooklyn, NY Tel: 646-322-7300		
DETAILS	A-2.3	
DRAWN BY: RAG	SCALE: AS NOTED	REV 0
		DATE: 06/10/07

Pads can be used to reduce noise, high frequency vibration and impact from typical machines as follows:



- Chillers
- Compressors
- HVAC Units
- Vent Sets
- Pumps
- Motor Generators
- Transformers
- Diesel Generators
- Punch Presses
- Lathes
- Saws
- Power Presses
- Drill Presses



Super W Pads should be used in full squares. Select the minimum number of squares required and design pad to the most convenient square or rectangle. The use of additional squares results in more conservative loading.

British Units Example—

Load is 980 lbs. 50 Duro capacity is 180 lbs.
 980/180 = 5.44 squares (Use 6 square modules).
 Pad may be 2 modules x 3 modules (4" x 6")
 or 1 module x 6 modules (2" x 12")

Metric Units Example—

Load is 5000 kgs. 50 Duro capacity is 80 kgs.
 5000/80 = 62.5 squares (minimum).
 Pad may be 8 modules x 8 modules (400 x 400mm)
 or 7 modules x 10 modules (350 x 500mm)
 or 6 modules x 11 modules (300 x 550mm) etc.

**SUPER W
LOAD RATINGS PER SQUARE**

DUROMETER	15% DEFLECTION	
	Load per 2" x 2" Square (lbs)	Load per 50x50mm Square (kgs)
30	80	35
40	120	53
Standard 50	180	80
60	240	105
70	360	158

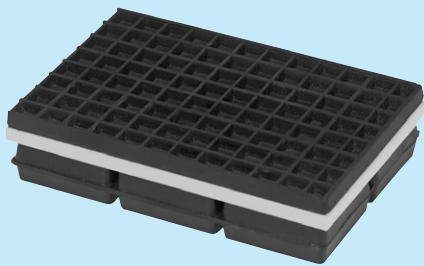


PADS MAY BE STACKED WITH 16 GAUGE (1.6MM) SHIMS BETWEEN LAYERS FOR INCREASED DEFLECTION.

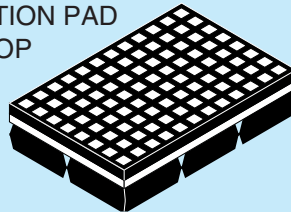
WMSW and MBSW PAD ASSEMBLIES

When there is a concentrated load because of a small leg on a heavy machine or a formed sheet metal leg without a bottom surface, you can always cut a pad to size and cement your own steel plate on top. Usually it is more convenient to buy them, so we offer two types. The WMSW has the cemented steel plate

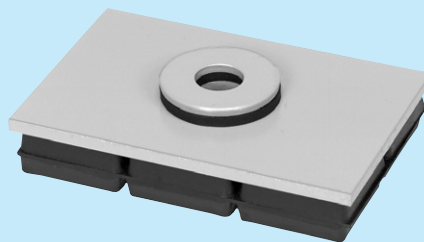
sandwiched between a super waffle pad on the bottom and a 1/4" friction pad on the top. No bolting required. The MBSW replaces the friction pad on top with a 3/4" diameter center hole for bolting through. We provide a 3/4" neoprene isolation washer cemented to a steel washer as well.



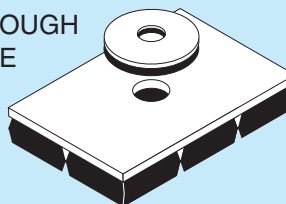
FRICITION PAD ON TOP



WMSW



THROUGH HOLE



MBSW

Type	Size (inches)	Size (mm)	Max. Load (lbs) (kgs)
WMSW-	10 x 12 x 1 1/4	250 x 300 x 32	6000 2722
	10 x 10 x 1 1/4	250 x 250 x 32	5000 2268
	8 x 8 x 1 1/4	200 x 200 x 32	3200 1452
	6 x 6 x 1 1/4	150 x 150 x 32	1800 816
	6 x 4 x 1 1/4	150 x 100 x 32	1200 544
MBSW-	10 x 12 x 1	250 x 300 x 25	6000 2722
	10 x 10 x 1	250 x 250 x 25	5000 2268
	8 x 8 x 1	200 x 200 x 25	3200 1452
	6 x 6 x 1	150 x 150 x 25	1800 816
	6 x 4 x 1	150 x 100 x 25	1200 544

Special Sizes on Request



MASON INDUSTRIES, INC.

350 Rabro Drive, Hauppauge, NY 11788 • 631/348-0282 • FAX 631/348-0279
 2101 W. Crescent Ave., Suite D, Anaheim, CA 92801 • 714/535-2727 • FAX 714/535-5738
 Email info@Mason-Ind.com or info@MasonAnaheim.com • Website www.Mason-Ind.com

Tm208
8/02

Printed
in U.S.A.



MASON INDUSTRIES, Inc.

Manufacturers of Vibration Control Products

350 Rabro Drive
Hauppauge, NY 11788
631/348-0282
FAX 631/348-0279
Info@Mason-Ind.com
www.Mason-Ind.com

2101 W. Crescent Ave., Suite D
Anaheim, CA 92801
714/535-2727
FAX 714/535-5738
Info@MasonAnaheim.com
www.MasonAnaheim.com

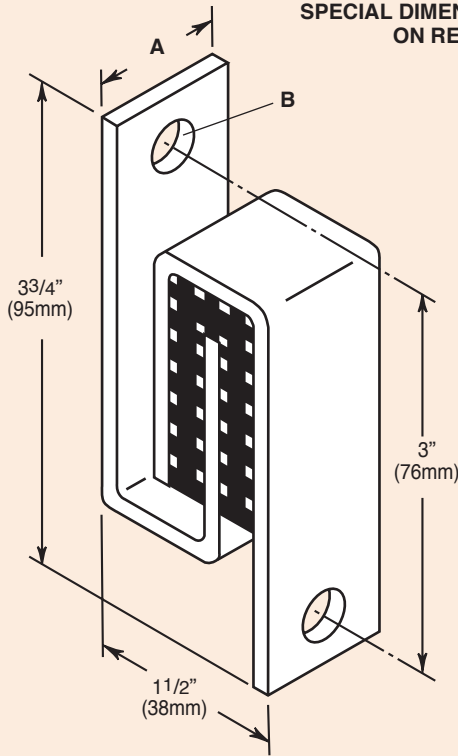
SPACE SAVING TYPE W NEOPRENE PAD INTERLOCKING CLIP (SWAY BRACE)

TYPE

WIC

DATA SHEET DS-402-1 B

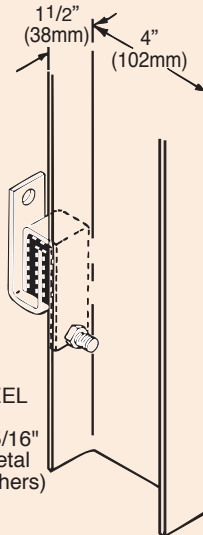
SPECIAL DIMENSIONS ON REQUEST



COMMON WALL WEIGHTS

Thickness (in)(mm)	Material	(lbs/ft ²) (kg/m ²)
4 102	Brick	35 175
8 203		75 365
12 305		115 560
4 102	Heavy Aggregate	35 175
6 152	Hollow	50 245
8 203	Concrete Block	58 285
12 305		90 440
4 102	Poured Concrete	48 235
6 152	Masonry	72 350
8 203		96 470
12 305		144 705

Thickness (in)(mm)	Material	(lbs/ft ²) (kg/m ²)
4 102	Steel Studding Alone	1.5 7.5
2x4 51x102	Wood Studding Alone	2.0 10
1/2 13	Gypsum Board	2.1 10
5/8 16		2.7 13
3/4 19		3.2 16
1 25	Cement Plaster	10.0 50
1 25	Gypsum Plaster	5.0 25
-	Metal Lathe	0.5 2.5
-	Gypsum Lathing Board	2.0 10



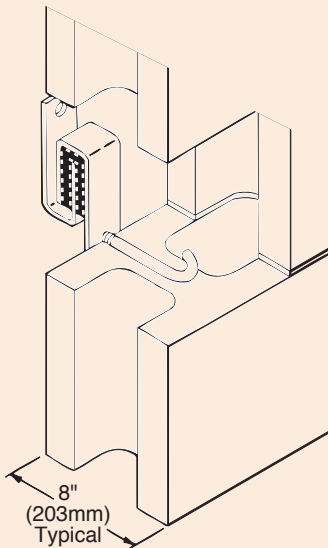
STANDARD STEEL
STUDDING END
WIC Brace with 5/16"
(8mm) Bolt for Metal
Studs (Bolt by Others)

MATERIAL:

Standard 40 Durometer
5/16"(8mm) Neoprene Waffle Pad

TYPE WIC DIMENSIONS (in mm)

Type & Size	A	B Hole Diameter
WIC-1	1 25	3/8 10
WIC-2	2 51	3/8 10



STANDARD
CONCRETE
BLOCK END
WIC Brace with 5/16"
(8mm) Diameter Rod
with 2"(51mm) I.D.
Hooked End for
Masonry Walls
(Hook by Others)

TYPE WIC LOAD RATINGS

Type & Size	Rated Horizontal Restraint & Deflection if Stressed		Maximum Assigned Wall Weight (lb)(kg)	Minimum Assigned Weight to Establish 15Hz(lb)(kg)
	Load (lb)(kg)	Defl (in)(mm)		
WIC-1	90 41	0.05 1.3	250 113	50 23
WIC-2	260 118	0.05 1.3	500 227	100 45

- Sway braces prevent buckling or overturning of tall or long walls.
- Buckling forces are extremely small when braces are reasonably spaced both horizontally and vertically as the brace spacing maintains a very low l/r column ratio.
- Our general recommendation is spacing on four foot centers both horizontally and vertically.
- The maximum axial restraint rating is approximately 33% of the maximum assigned wall weight and extremely conservative.
- Vertical resistance information is provided for checking embedment requirements in walls and shear or pullout forces on both ends of the sway braces. Sway braces are not to be used for vertical supports.

- Response frequency is a function of the attached mass and the dynamic stiffness in the direction of vibration. The 15 Hz response is normally lower and more desirable than what is usually specified. Heavier weight assignments than the specified minimum will lower the response frequency by the square root of the ratio of the minimum weight to the assigned value multiplied by 15 Hz. Lighter loads will increase the frequency by the same proportion.

EXAMPLE: Steel stud wall with 2 layers of 3/4 inch gypsum board weighing 7.9 lbs. per sq/ft. Sway braces on 4 foot centers both ways.

Assigned Weight = 16 x 7.9 = 126 lbs.

WIC-1 Selection (Maximum 250 lbs)

Frequency = 15Hz x $\sqrt{126/250}$ = 10.65 Hz



MASON INDUSTRIES, Inc.

Manufacturers of Vibration Control Products
 NY Mailing Address: PO Box 410, Smithtown, NY 11787
 350 Rabro Drive 2101 W. Crescent Ave., Suite D
 Hauppauge, NY 11788 Anaheim, CA 92801
 631/348-0282 714/535-2727
 FAX 631/348-0279 FAX 714/535-5738
 Info@Mason-Ind.com Info@MasonAnaheim.com

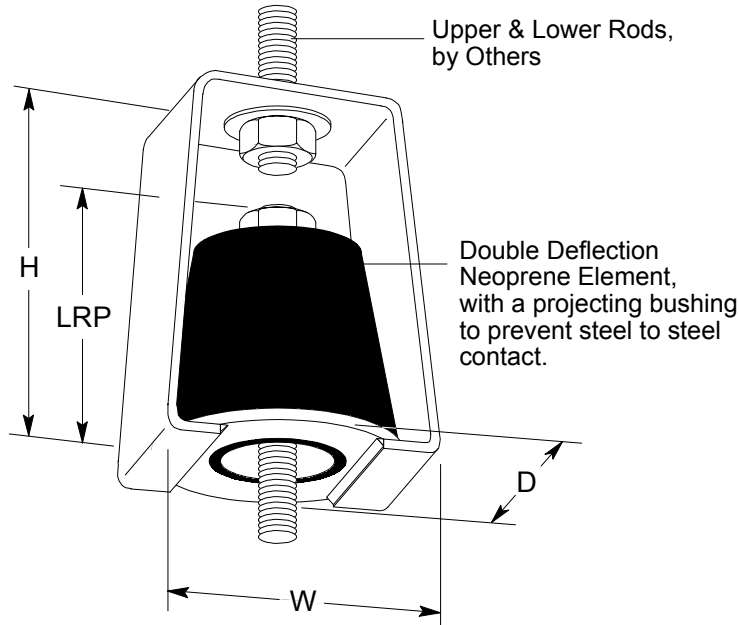
CERTIFIED FOR

JOB NAME :
 CUSTOMER :
 CUSTOMER P.O. :
 MASON M.I. :
 DWG. NO. :

TYPE

HD

Double Deflection
 Neoprene Hangers



TYPE HD RATINGS

Size (Color Mark)	Durometer	Rated Capacity Range [lbs]	Max. Rated Deflection [in]
HD-Green	40	Up to 35	0.20
HD-White	60	35 - 75	0.20
HD-A-Black	30	Up to 45	0.35
HD-A-Green	40	30 - 75	0.35
HD-A-Red	50	60 - 125	0.35
HD-B-Red	50	Up to 235	0.40
HD-B-White	60	180 - 380	0.40
HD-B-Yellow	70	320 - 650	0.40
HD-BS-Blue	70	500 - 1000	0.40
HD-CS-Blue	70	1000 - 2100	0.40
HD-DS-Blue	70	2100 - 4200	0.40

Hanger elements have straight line deflection curves.

LRP - Lower Rod Penetration
 MRD - Maximum Rod Diameter

TYPE HD DIMENSIONS (inches)

Size	D	H	W	LRP	MRD
HD	1 3/4	2 1/4	1 7/8	1 1/4	3/8
HD-A	2	2 3/4	2 1/4	2 1/4	1/2
HD-B	3 1/4	4 1/2	4 1/4	3	3/4
HD-BS	3 1/4	4 1/2	4 1/4	3	3/4
HD-CS	3 1/4	5	4 1/4	3 1/4	7/8
HD-DS	4	6 1/4	4 3/4	3 1/4	7/8

CERTIFICATION DATA

TAG : _____
 UNIT : _____

PLAN VIEW OF HANGER LOCATION :



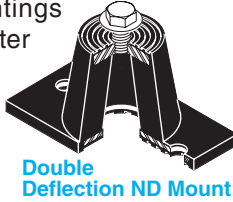
_____ inch SPECIFIED DEFLECTION

1 :	6 :
2 :	7 :
3 :	8 :
4 :	9 :
5 :	10 :
Material for One Set : _____ Sets Required	

DWN : _____ CHKD: _____ DATE : _____

DWG NO. : _____

Rather than bolting two mountings together, we decided to do this properly and started manufacturing two mountings using the same base and top plates. The shorter Type N for single deflection; the taller ND, double deflection. We include capscrews and washers, to eliminate the nuisance of our customers finding proper bolts.



Double Deflection ND Mount

Since rubber mountings are inexpensive, we now sell only the ND, so there is always the benefit of the better product.

It is not necessary to bolt these mountings to the floor on most installations. They can be used under flat bases that have no bolt holes in much the same manner as rubber pads. When the equipment has a flush drain pan or tank on the bottom, the mounting may be inverted so that the rectangular rubber covered steel base plate provides support over a large area.

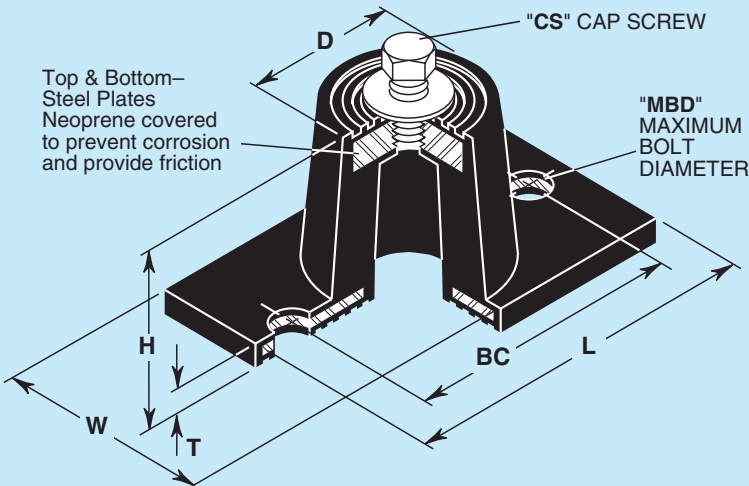
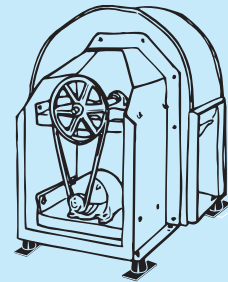
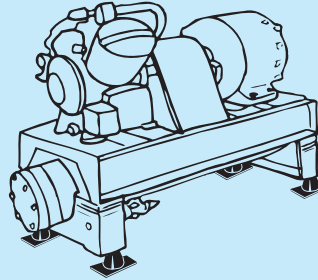
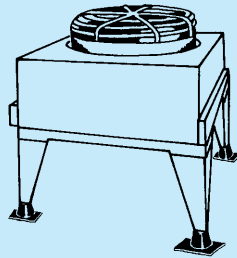
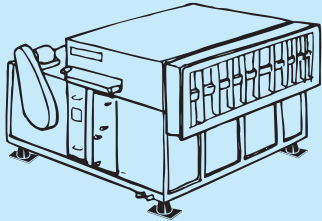


Inverted

Standard mountings are furnished in oil resistant Neoprene. Since we mold these products ourselves, bridge bearing quality Neoprene, Natural Rubber or other elastomers are readily available to meet your requirements.

SPECIFICATION

Neoprene mountings shall have a minimum static deflection of 0.35" (9mm). All metal surfaces shall be Neoprene covered to prevent corrosion and have friction pads, both top and bottom. Bolt holes shall be provided on the bottom and a tapped hole with capscrew and washer on top. Mountings shall be Type ND, as manufactured by Mason Industries, Inc.



TYPE ND RATINGS

Size (Color Mark)	Duro-meter	Rated Capacity Range		Max Rated Defl
		(lbs)	(kgs)	(in) (mm)
ND-A-Black	30	15-45	7-20	0.35 9
ND-A-Green	40	30-75	13-34	
ND-A-Red	50	60-125	27-57	
ND-B-Black	30	50-100	23-45	0.40 10
ND-B-Green	40	75-150	34-68	
ND-B-Red	50	110-235	50-107	
ND-B-White	60	180-380	82-172	
ND-B-Yellow	70	300-600	136-272	
ND-C-Green	40	140-260	64-118	0.50 13
ND-C-Red	50	200-400	91-181	
ND-C-White	60	310-600	141-272	
ND-C-Yellow	70	520-1000	236-454	
ND-D-Yellow	70	1060-2100	481-953	0.50 13
ND-DS-Yellow	70	2200-4300	998-1950	0.50 13

Mounts have straight line deflection curves.

TYPE ND DIMENSIONS (inches mm)

Size	D	H	L	T	W	BC	CS	MBD
ND-A	13/16 30	11/2 38	33/16 81	3/16 5	15/8 41	23/8 60	5/16 -18 x 3/4" x 19	5/16 8
ND-B	13/4 44	17/8 48	37/8 98	1/4 6	25/16 59	3 76	3/8 -16 x 1" x 25	5/16 8
ND-C	29/16 65	23/4 70	51/2 140	1/4 6	35/16 84	41/8 105	1/2 -13 x 1" x 25	1/2 13
ND-D	33/8 86	23/4 70	61/4 159	5/16 8	4 102	5 127	1/2 -13 x 1" x 25	1/2 13
ND-DS	33/8 86	23/4 70	61/4 159	5/16 8	4 102	5 127	1/2 -13 x 1" x 25	1/2 13